

# Central Park 2 Pattaya 4Bed - 3Bath

■■■■ ■■■■■■, Thailand  
Reference: 1000

฿15,990,000



4 Bedrooms



3 Bathrooms



Villa

# Property Description

---

Pearl Property presents a stylish pool villa in the well-established Central Park 2 Pattaya, a sought-after residential community known for its convenient location near Sukhumvit Road, offering quick access to Jomtien Beach, Tesco Lotus, Outlet Mall, international schools, and major lifestyle hubs across South Pattaya and Jomtien. This private home combines comfort, space, and practicality, making it ideal for family living.

Set on 59 sqw of land with a 320 sqm usable area, this two-storey villa offers a well-planned layout featuring a bright living area, four bedrooms, and three bathrooms. The European kitchen includes a counter bar for casual dining, while the separate Thai kitchen ensures comfortable everyday cooking. A dedicated laundry room adds further convenience for family routines.

Key features of the property include:

- Private swimming pool
- 1 spacious living room
- 4 bedrooms and 3 bathrooms
- European kitchen with bar counter

- Separate Thai kitchen
- Laundry room
- Built-in furniture throughout the entire house
- Loose furniture included in all rooms

This home comes move-in ready with generous extras including built-in furniture throughout, bedroom sets for all four rooms, loose furniture, five air-conditioning units, four televisions, two refrigerators, electric stove with hood, dishwasher, and three water heaters. The outdoor area is beautifully prepared with new landscaping and fresh turf, offering a pleasant atmosphere for relaxation.

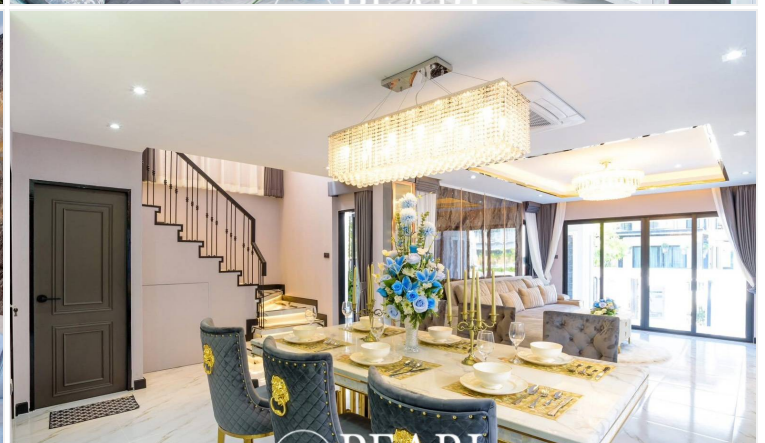
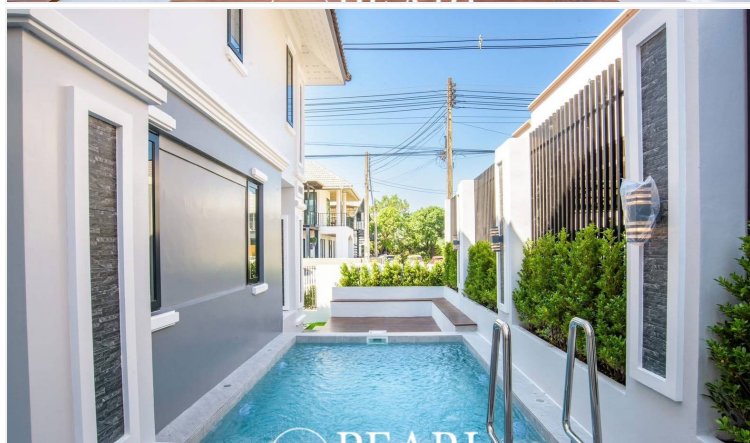
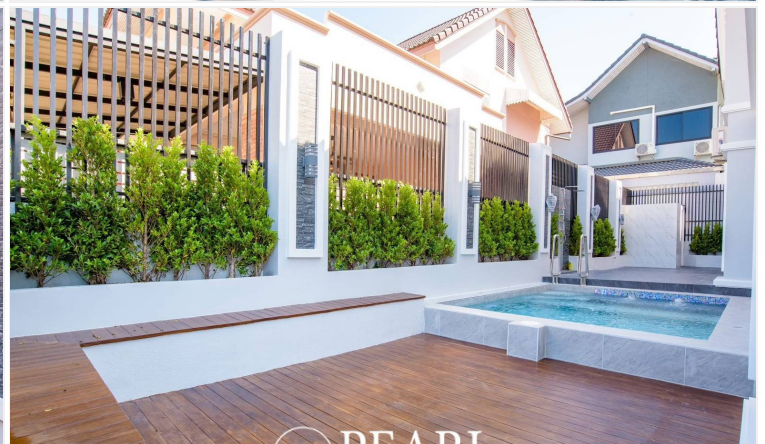
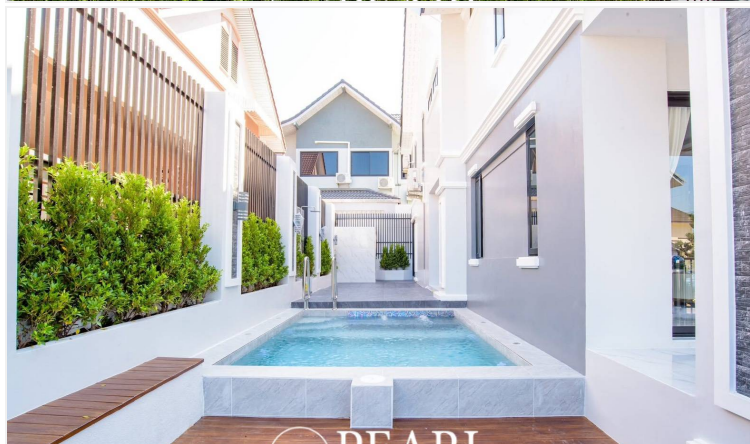
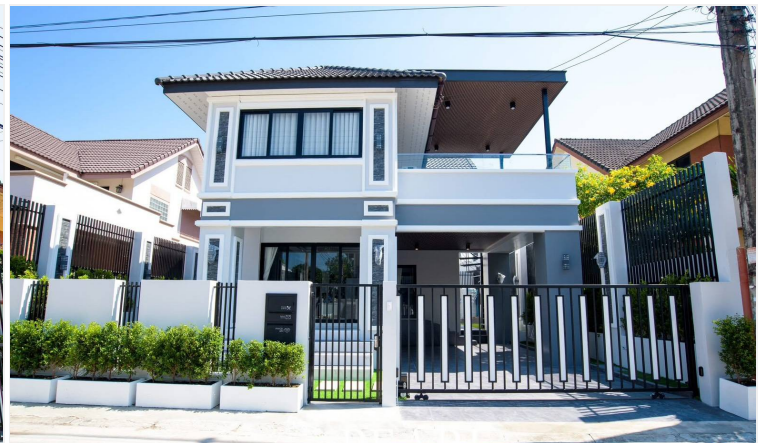
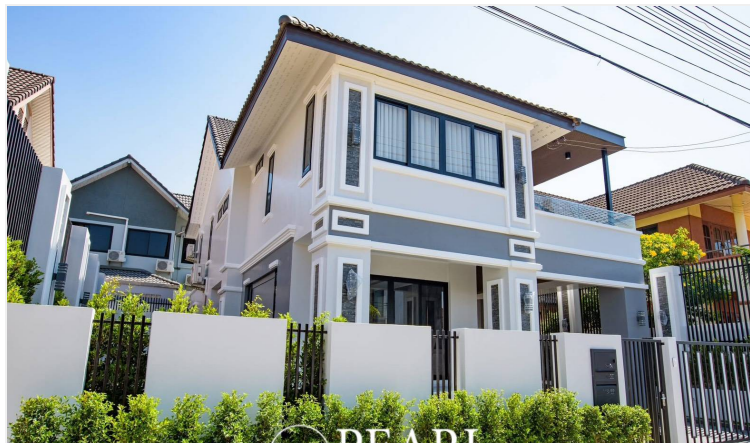
Located in a quiet yet central neighborhood, this villa provides the perfect balance between privacy and convenience, ideal for homeowners seeking comfort with easy city access.

Contact us to schedule a private viewing or arrange a virtual tour.

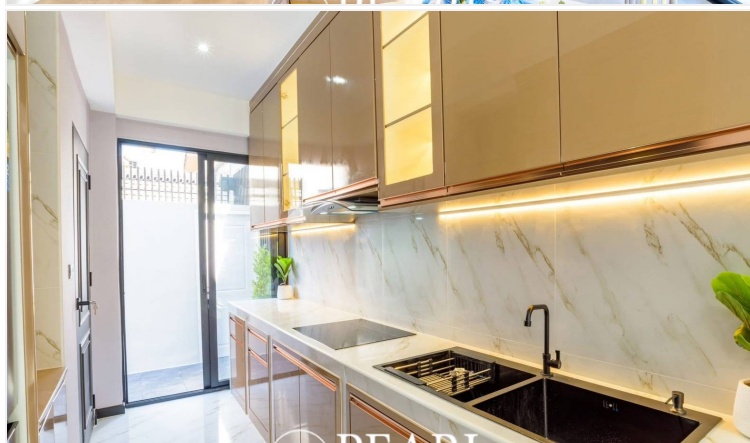
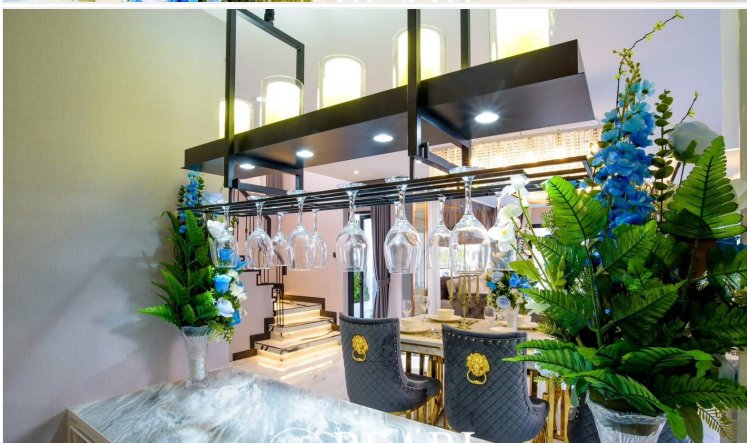
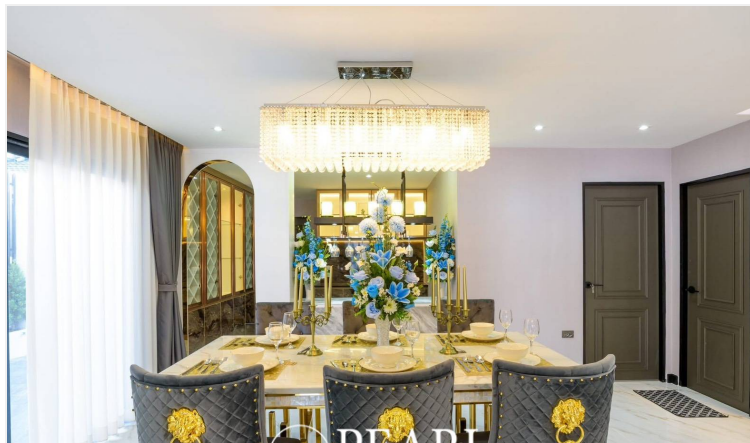
## Photo Gallery

---










## Property Details

- **Property Type:** Villa
- **Location:**  Thailand
- **Internal Area:** 320m<sup>2</sup>
- **Land Area:** 236m<sup>2</sup>
- **Price:** **\$15,990,000**
- **Bedrooms:** 4
- **Bathrooms:** 3

## Location

