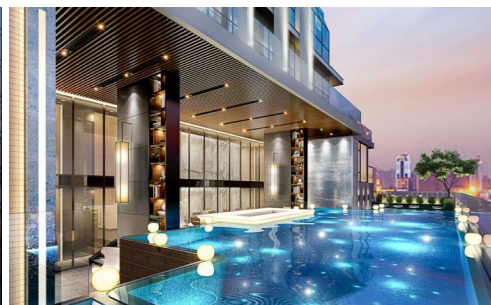
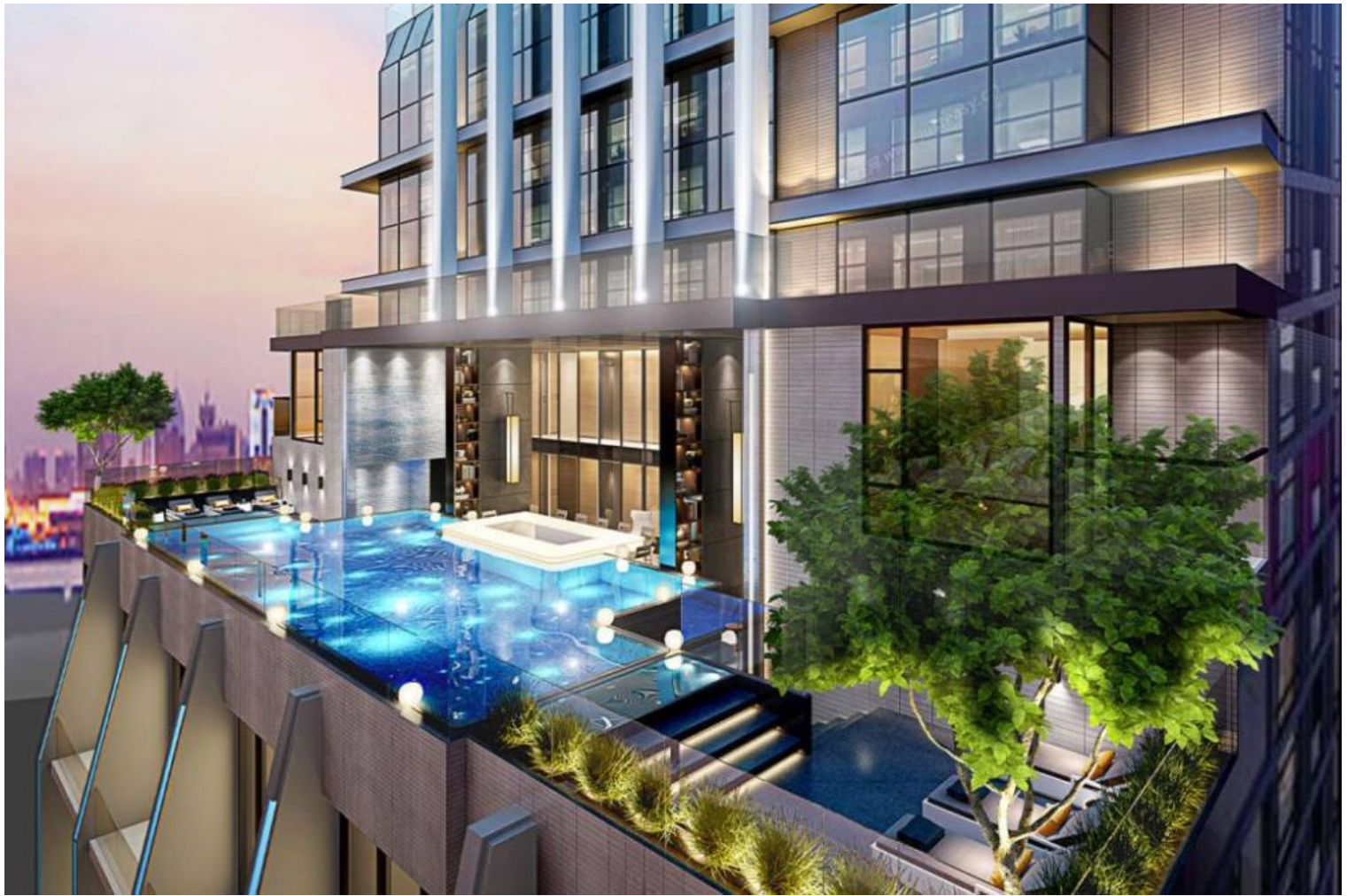


# Beverly Mountain Bay Pattaya

Pattaya, Bang Lamung, Thailand

Reference: 301

## ฿2,890,000



0 Bedrooms

0 Bathrooms

Condo

# Property Description

---

**1. Introduction:** Discover the epitome of luxury living at Beverly Mountain Bay Pattaya, a standout highrise condo that seamlessly integrates modern sophistication with the tranquility of mountain views. Developed by Jantarapa Co., Ltd., this property is an ideal haven for those seeking a luxurious yet peaceful lifestyle in Pattaya.

**2. Location and Neighborhood:** Situated in the esteemed Pratumnak Soi 5, Nong Prue, Mueang Pattaya, Banglamung, Chonburi, Beverly Mountain Bay resides in the upscale Pratumnak Hill neighborhood. This area is celebrated for its refined residential vibe and close proximity to some of Pattaya's most alluring tourist destinations, providing residents with a blend of exclusivity and convenience.

**3. Property Details:** Completed in 2021, Beverly Mountain Bay spans 22 stories and houses 26 units, varying from intimate studio apartments to generous 2-bedroom configurations. The condominium's design, a collaboration between acclaimed Hong Kong designers HENRY and Joe Chan, emphasizes sea views and an elegant, personalized aesthetic.

**4. Condition and Amenities:** The luxurious finish and premium quality of construction define Beverly Mountain Bay. The development includes 199 residential units, 2 retail shops, and offers substantial parking facilities with 68 car parking spaces, catering to the needs of residents and guests alike.

**5. Financial Information:** For financial details, including pricing, taxes, management fees, and potential investment opportunities, interested parties are encouraged to contact the managing real estate agency or developer directly.

**6. Contact Information:** For inquiries or to arrange a viewing, please reach out to Pearl Property:

- Tel: +66-33-135-053

- Whatsapp: +66-33-135-053

- Line: @pearlproperty
  
- Email: [info@pearlpropertypattaya.com](mailto:info@pearlpropertypattaya.com)

# Photo Gallery

---



## Property Details

---

- **Property Type:** Condo
- **Location:** Pattaya, Bang Lamung, Thailand
- **Land Area:** 2400m<sup>2</sup>
- **Price:** ฿2,890,000
- **Bedrooms:** 0
- **Bathrooms:** 0

## Property Features

---

- Security
- Gym
- Sauna
- Swimming Pool
- Air Conditioning
- Balcony
- Car Park
- Electricity
- Integral Kitchen
- Internet
- Alarm
- Children's Area
- Concierge
- Guardhouse
- Lift
- Equipped Kitchen
- Disabled Access
- Library

## Location

---

