

Baan Mae Bibury Phase 2 - (Showhouse)

4 Bed 5 Bath With Private swimming pool

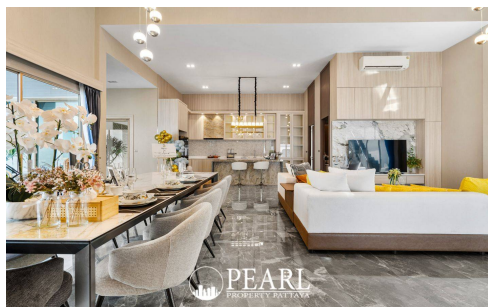
Pattaya, Toongklom-Talman, Thailand

Reference: 1983

฿15,550,000



4 Bedrooms



5 Bathrooms



Villa

Property Description

Charming Living at Baan Mae Bibury Pattaya (Phase 2)

Welcome to Baan Mae Bibury, an exclusive residential haven in the heart of Pattaya. This house project offers a serene and luxurious lifestyle, combining modern comforts with a tranquil environment. With its thoughtfully designed homes and top-notch amenities, Baan Mae Bibury is the perfect place for families and individuals seeking an exceptional living experience.

Prime Location and Vibrant Neighborhood

Located in the vibrant city of Pattaya, Baan Mae Bibury is nestled in a peaceful neighborhood yet is conveniently close to the city's attractions. Enjoy easy access to local markets, shopping malls, international schools, hospitals, and beautiful beaches. The neighborhood is well-connected by public transportation, ensuring that all your daily needs and entertainment options are just a short drive away.

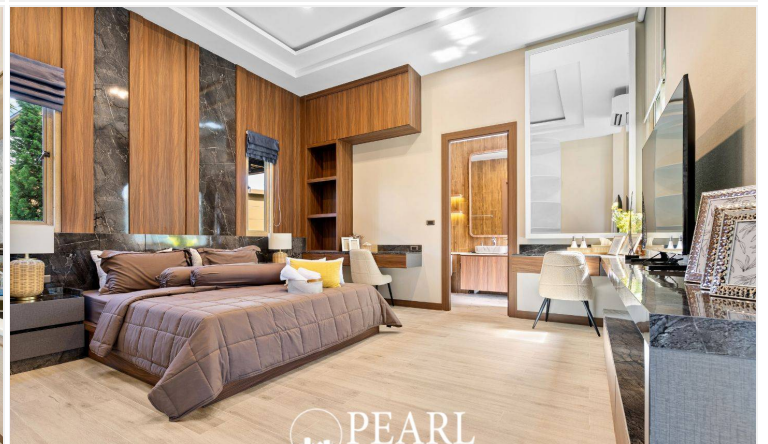
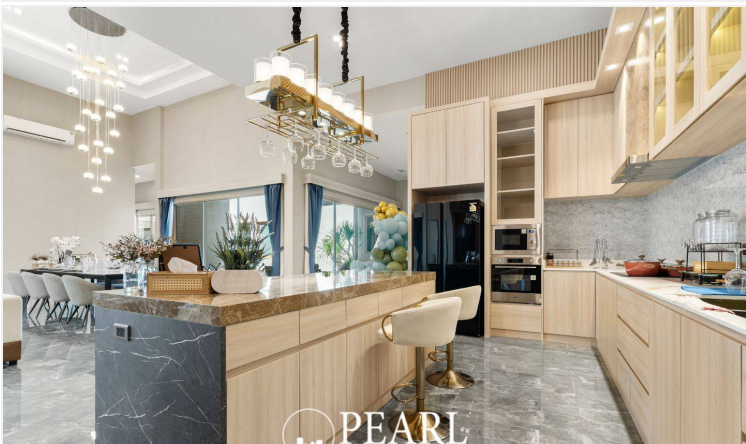
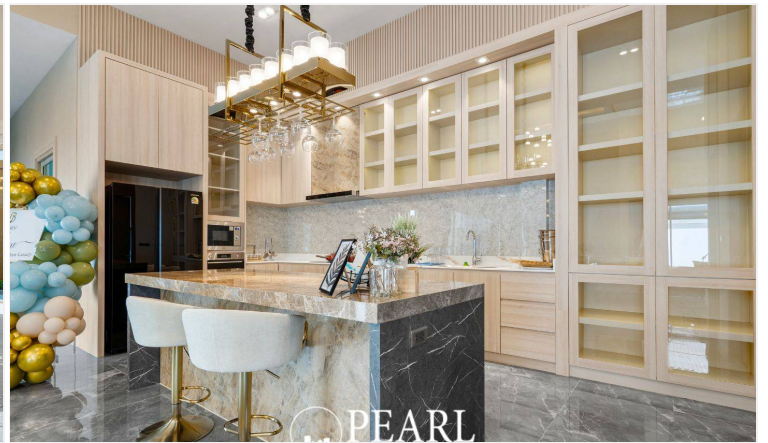
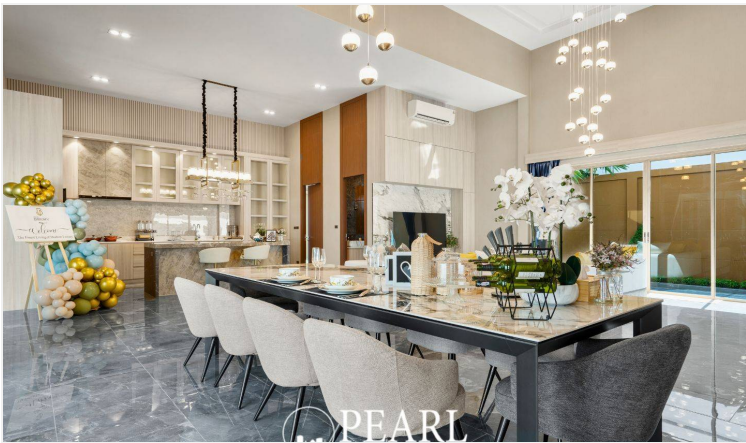
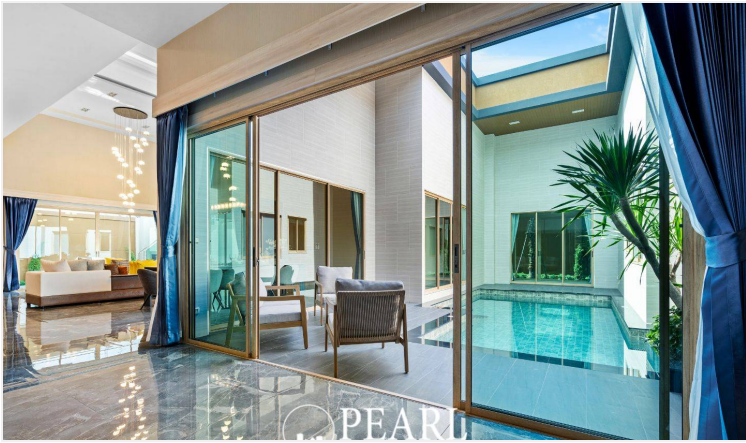
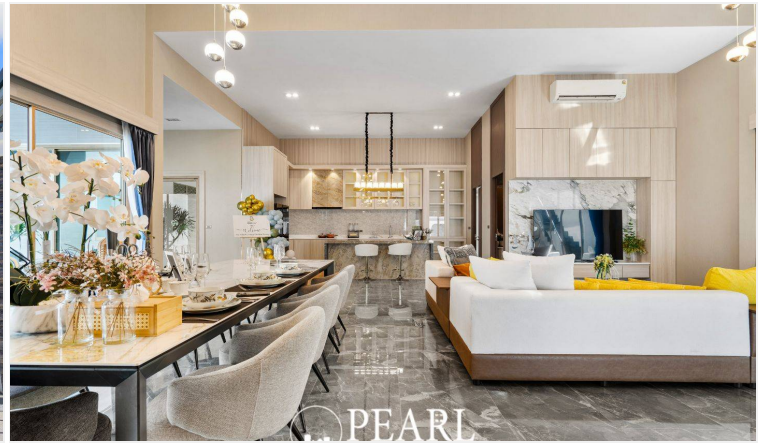
Property Details

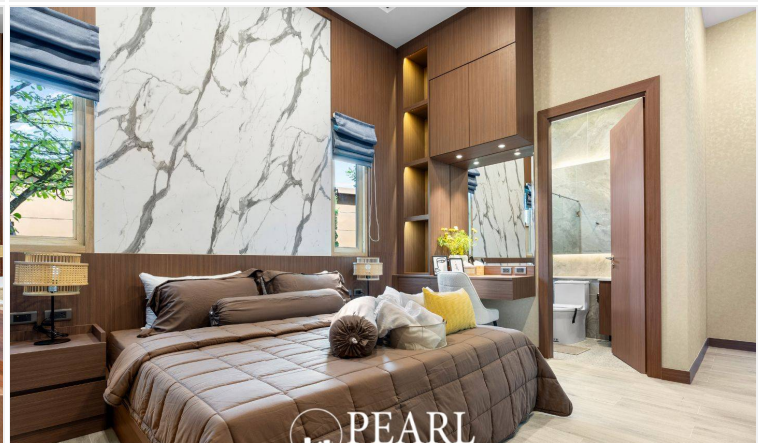
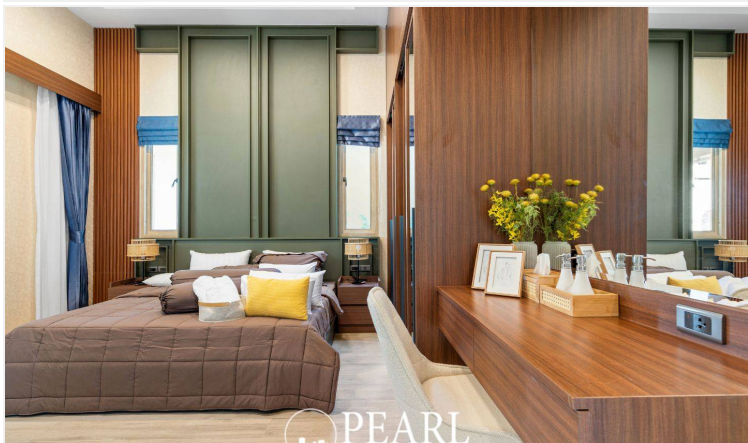
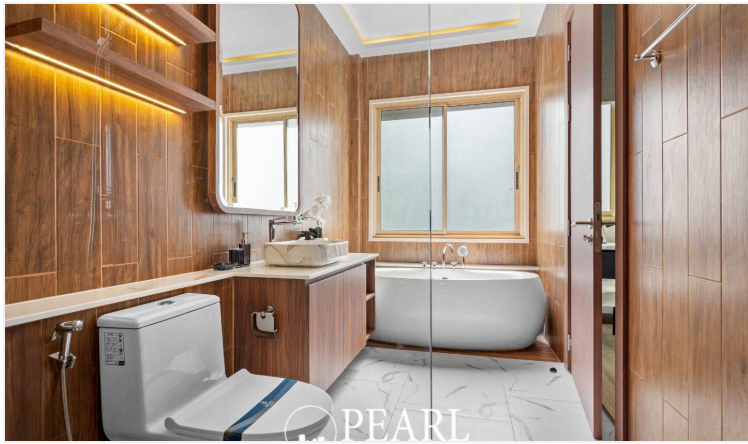
Baan Mae Bibury features a collection of elegantly designed houses, each offering spacious living areas that cater to modern lifestyles.

Size: Generous land area starting from 128.63 square wah, with living spaces of 429.14 square meters, including 4 bedrooms and 5 bathrooms.

Special Features: Each house boasts a perfect blend of design and functionality, featuring a private garden, covered parking, a large swimming pool, and rooftop terraces for your enjoyment.

Photo Gallery





Property Details

- **Property Type:** Villa
- **Location:** Pattaya, Toongklom-Talman, Thailand
- **Internal Area:** 429.14m²
- **Land Area:** 528m²
- **Price:** ฿15,550,000
- **Bedrooms:** 4
- **Bathrooms:** 5

Location

