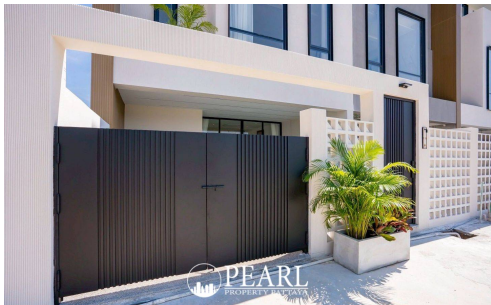
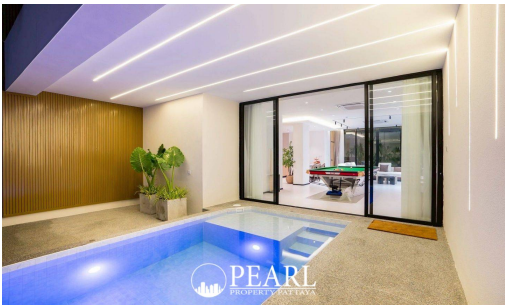


# Aura Villa Reserve

Pattaya, Pattaya, Thailand  
Reference: 1450

฿15,443,102



4 Bedrooms

5 Bathrooms

Villa

# Property Description

---

**Pearl Property presents Aura Villa Reserve - a luxury pool villa enclave in the heart of Pattaya, perfect for premium living and high-yield investment.**

Set within one of Pattaya’s most sought-after neighborhoods, Aura Villa Reserve offers a rare blend of upscale tranquility and urban convenience. With only **21 exclusive units**, this boutique development promises unmatched privacy, elegant design, and a strong investment opportunity.

This low-rise estate features **luxuriously furnished 4-5 bedroom private pool villas**, thoughtfully designed to accommodate both family living and rental potential. Construction begins in **Q4 2024** with completion expected by **Q2 2026**, and selected units ready to move in within 4 months.

Project Highlights:

- Only 21 units – ensuring privacy and exclusivity
- Fully furnished pool villas with modern interiors
- Pet-friendly and mosquito-free environment
- Flexible layout options: 4 to 5 bedrooms

Premium Facilities:

- Expansive communal swimming pool and water park
- Clubhouse, fitness center, and sauna
- Lush green zones and on-site restaurant
- 24-hour 5-star security
- Prime location in central Pattaya with easy access to beaches, shopping, and international schools

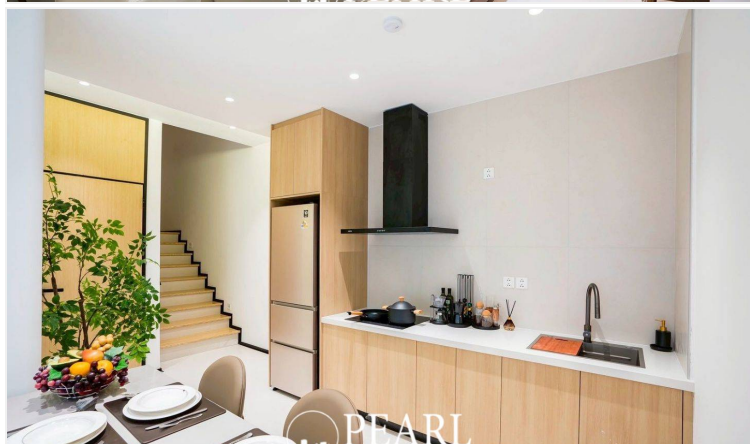
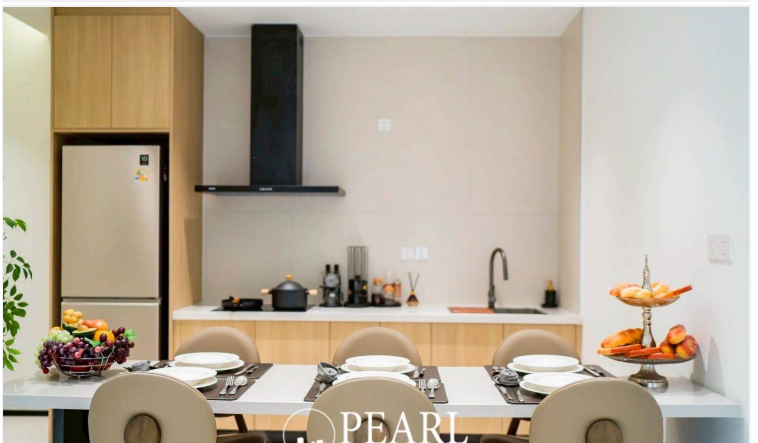
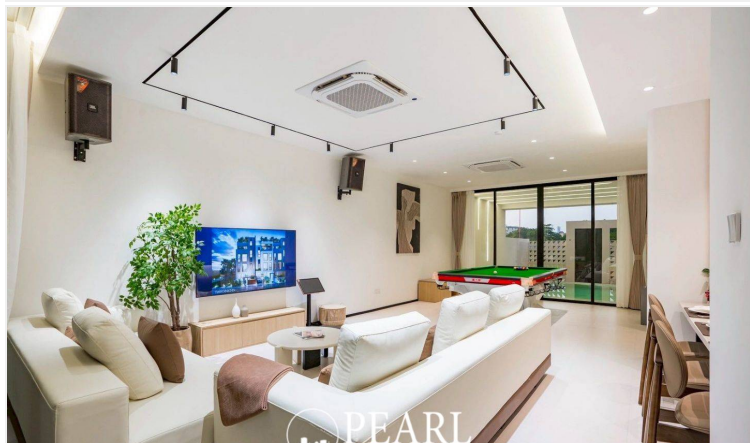
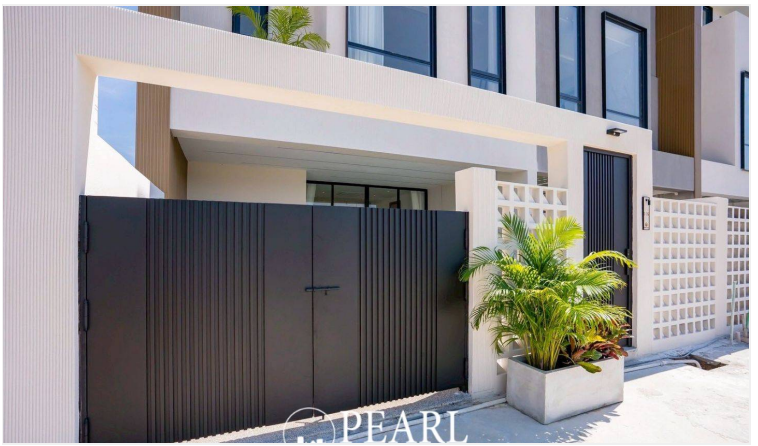
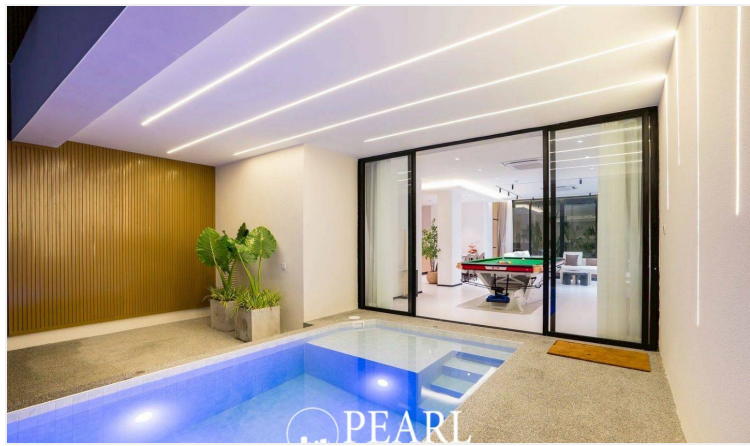
Ideal for families, retirees, or investors, Aura Villa Reserve offers a **guaranteed 6% annual return for 6 years**—a standout proposition for savvy buyers.

Contact us to schedule a private viewing or arrange a virtual tour today.

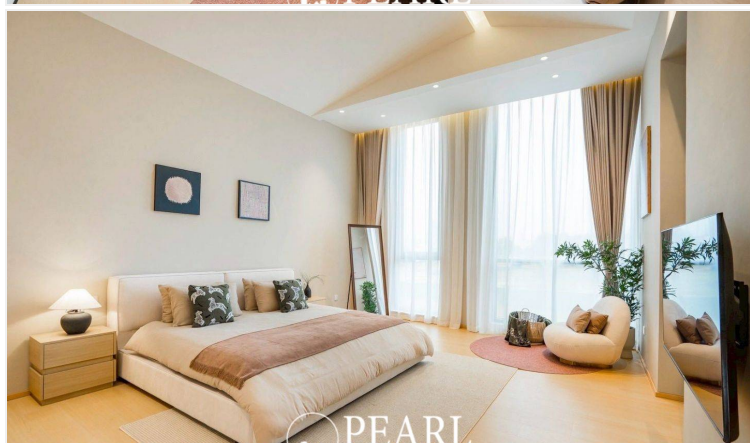
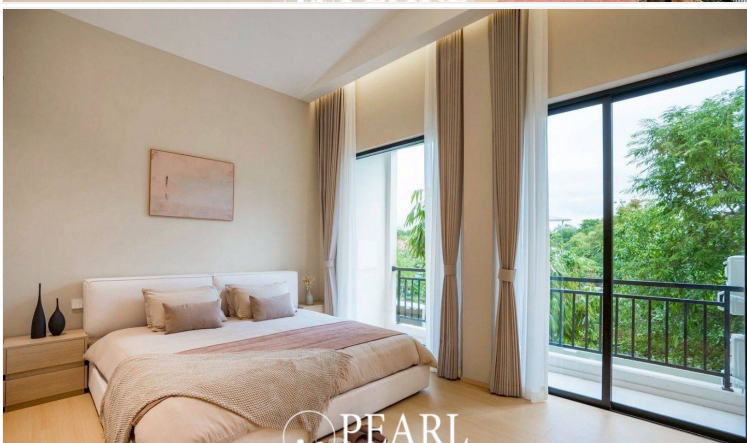
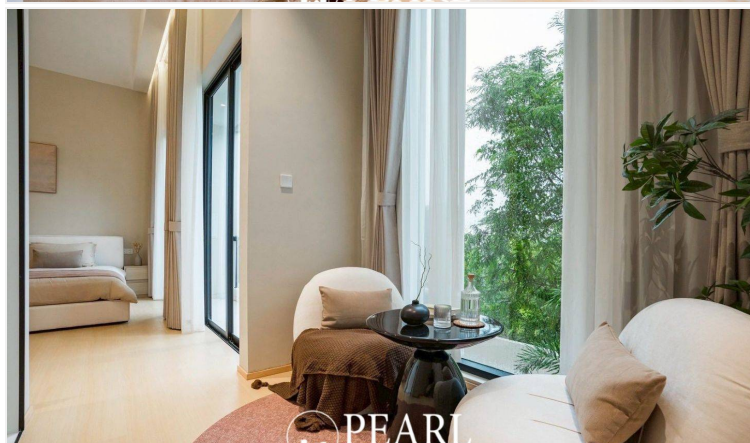
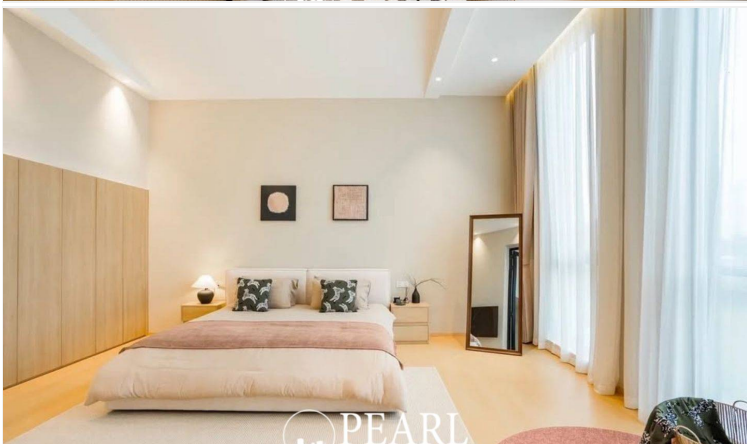
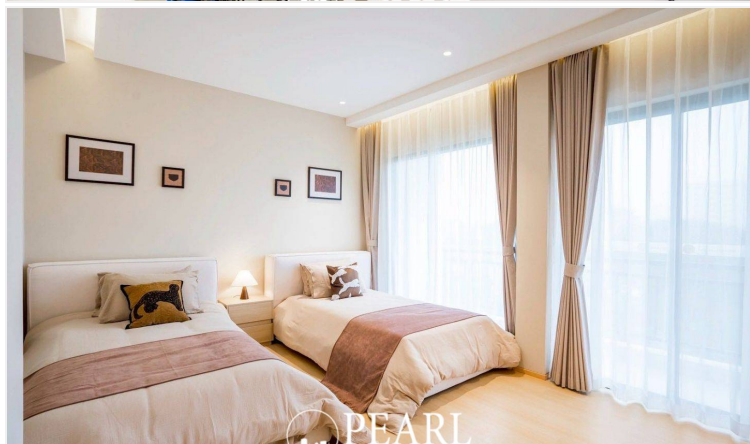
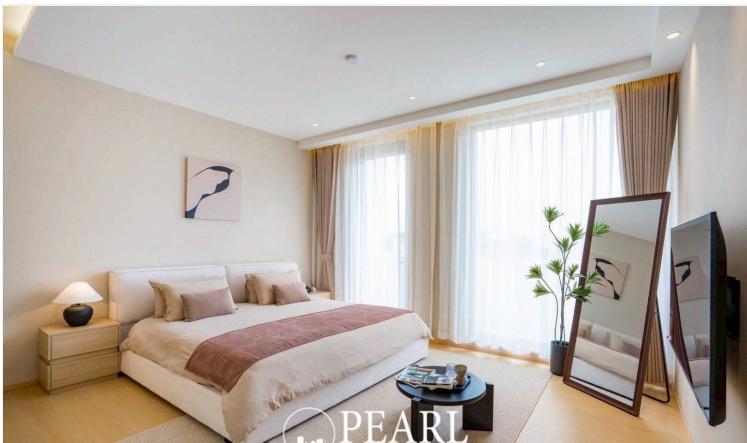
# Photo Gallery

---









# Property Details

- **Property Type:** Villa
- **Location:** Pattaya, Pattaya, Thailand
- **Internal Area:** 285m<sup>2</sup>
- **Land Area:** 137m<sup>2</sup>
- **Price:** ฿15,443,102
- **Bedrooms:** 4
- **Bathrooms:** 5

# Location

