

Azure Luxe Residence - 5 Bedroom 7 Bathroom

Na Chom Thian, Thailand
Reference: 5026

฿34,900,000



5 Bedrooms



6 Bathrooms



Villa

Property Description

Azure Luxe Residence – A Luxurious 4-Storey Twin House with Private Pool in the Heart of Na Jomtien, South Pattaya

Pearl Property presents this stunning luxury twin house designed in modern style across four spacious levels. Thoughtfully crafted to suit long-term living, holiday homes, or premium rental investment, Azure Luxe Residence offers the perfect blend of elegance, functionality, and location.

Project Details

- Usable Area: 701 sq.m. (excluding pool area)
- Private Pool: 25 sq.m.
- Floors: 4
- Parking: 3 cars

Interior Features

- 5 bedrooms
- 6 bathrooms
- Fully equipped European-style kitchen
- Expansive living and dining areas
- 2 multi-purpose rooms (ideal for a gym, home theater, or BBQ lounge)
- 2 rooftop terraces (on the 3rd and 4th floors)
- Maid's room with en-suite bathroom
- Pre-installed space for home elevator

Key Highlights

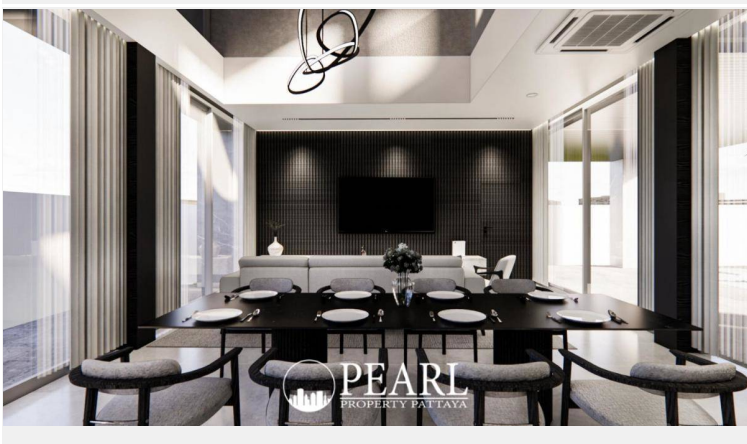
- Generous indoor living space with a private pool
- Ideal for large families or those seeking a private vacation home
- High-privacy design with efficient indoor-outdoor space planning
- Strong structural build, with potential for future functional upgrades
- Excellent long-term investment for luxury rentals or commercial villa development

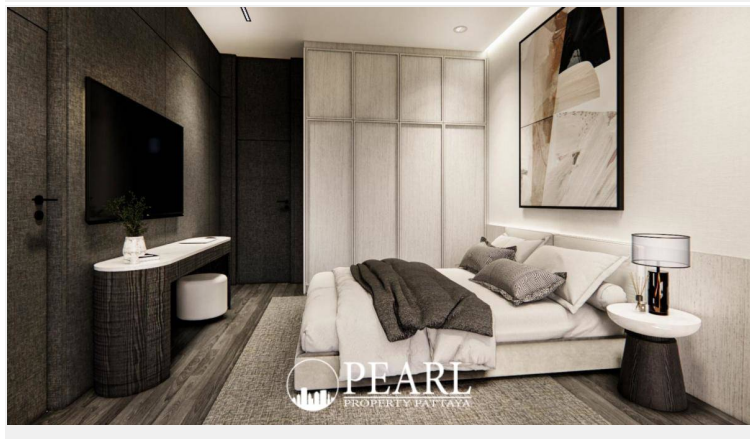
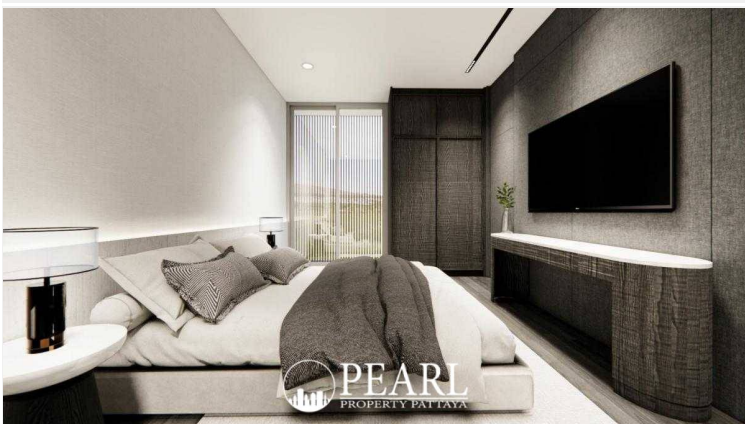
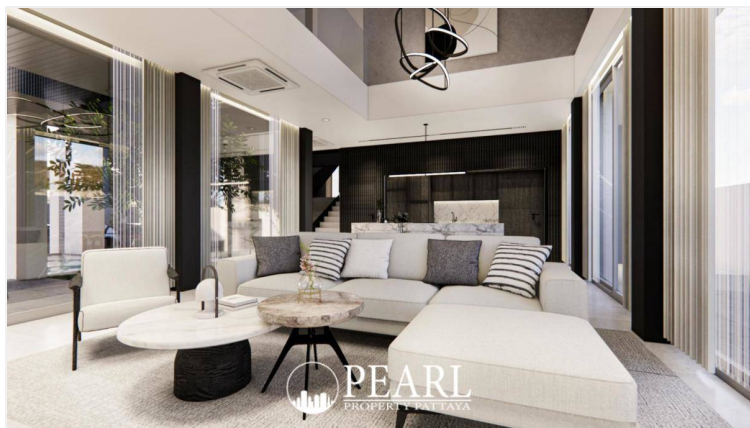
Location

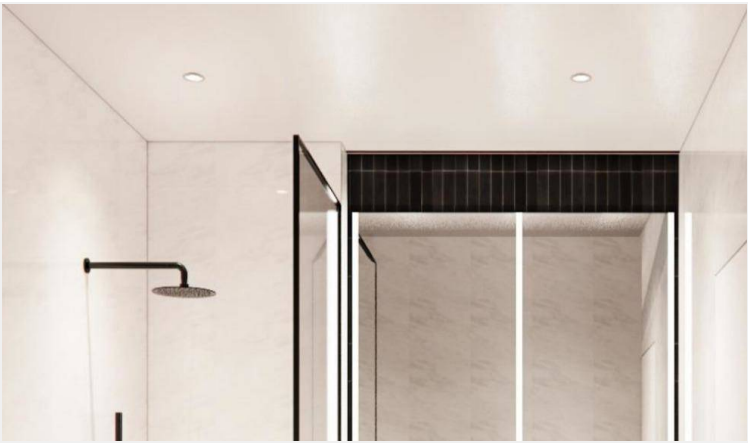
Strategically located in Na Jomtien, South Pattaya—an area known for its high growth and convenience. The residence is surrounded by cafes, restaurants, tourist attractions, and offers easy access to major roads and the city. Perfect for both living and investment.

Starting Price: 34.9 Million Baht

Photo Gallery







Property Details

- **Property Type:** Villa
- **Location:** Na Chom Thian, Thailand
- **Internal Area:** 701m²
- **Land Area:** 412m²
- **Price:** ฿34,900,000
- **Bedrooms:** 5
- **Bathrooms:** 6

Property Features

- Security
- Swimming Pool
- Air Conditioning
- Balcony
- Car Park
- Integral Kitchen
- Internet
- Lift
- Equipped Kitchen

Location

