

# Duplex Riviera Jomtien - 5 Bedrooms 5 Bathrooms (43-44th Floor)

Pattaya, Jomtien, Thailand  
Reference: 8652

฿59,293,800



5 Bedrooms



5 Bathrooms



Condo

# Property Description

---

**Pearl Property presents The Riviera Jomtien**, the **new landmark of Jomtien**, offering a luxury high-rise living experience with breathtaking **panoramic sea views**. Designed to stand out on the skyline, this prestigious development provides **world-class facilities** and an unbeatable location.

## Prime Location

Conveniently situated just off **Jomtien Second Road**, with **easy access to Sukhumvit Road** and the heart of Pattaya. The condominium's **elevated position** ensures over **80% of units enjoy direct sea views**, making it one of the most desirable residences in Jomtien.

## Unrivalled Facilities

- **Infinity-edge swimming pool & Jacuzzi**
- **Sky fitness center with stunning views**
- **Clubhouse & meeting room**
- **Games room & kid's club**

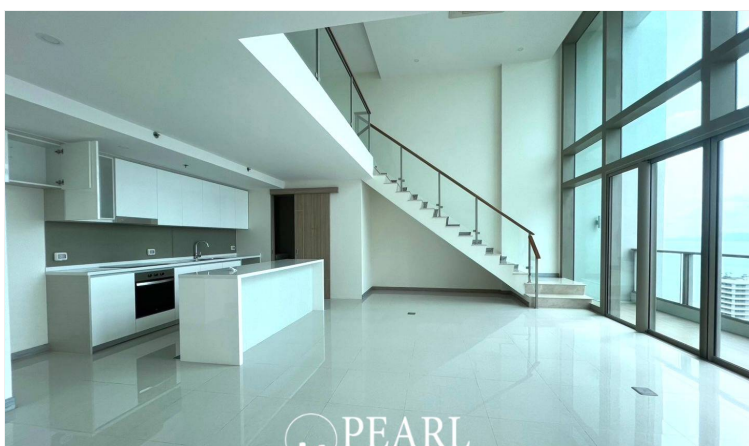
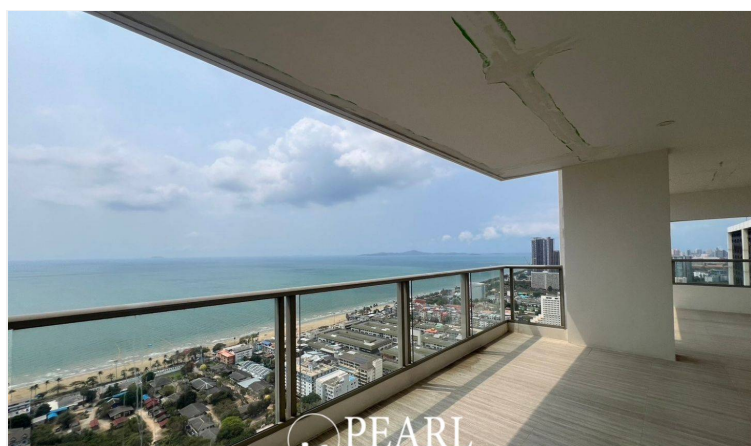
- **Sauna & relaxation areas**

This **stunning unit** is available for sale under **Foreign Quota**, allowing international buyers to secure a prime investment in **one of Jomtien's most iconic developments**.

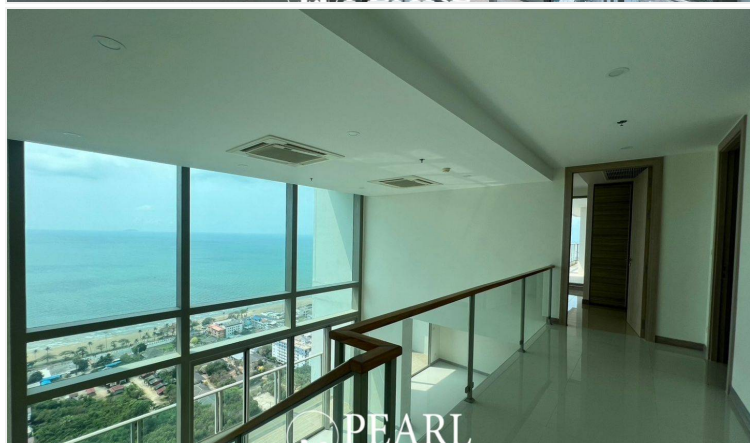
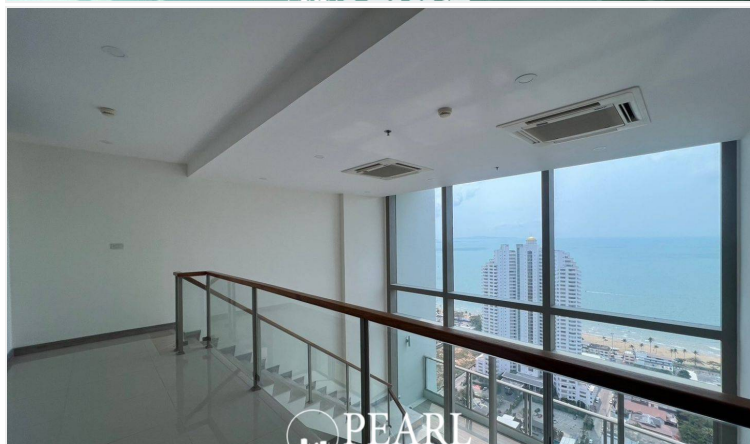
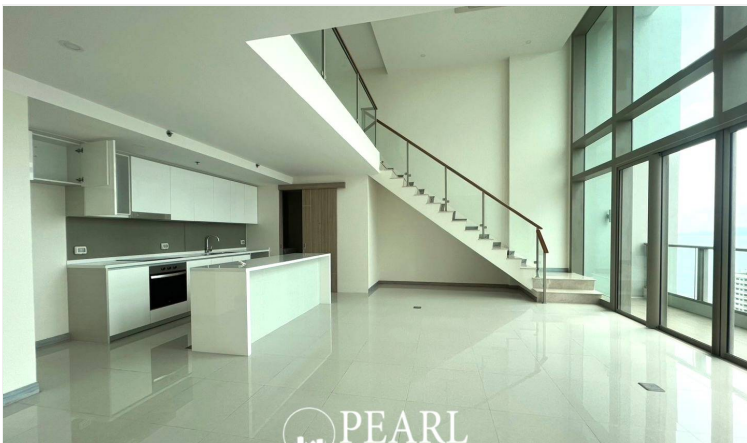
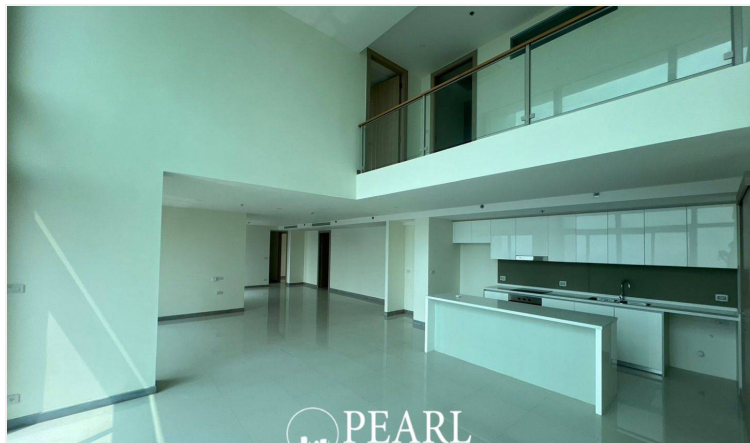
Contact us today to schedule a private viewing!

## Photo Gallery

---











# Property Details

---

- **Property Type:** Condo
- **Location:** Pattaya, Jomtien, Thailand
- **Internal Area:** 329.41m<sup>2</sup>
- **Land Area:** 329m<sup>2</sup>
- **Price:** ฿59,293,800
- **Bedrooms:** 5
- **Bathrooms:** 5

# Property Features

---

- Security
- Gym
- Jacuzzi
- Sauna
- Swimming Pool
- Air Conditioning
- Balcony
- Car Park
- Electricity
- Integral Kitchen
- Internet
- Alarm
- Children's Area
- Concierge
- Guardhouse
- Lift
- Roof Garden
- Equipped Kitchen
- Terrace
- Disabled Access

# Location

---

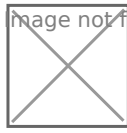


image not found or type unknown