

Chieftain by Patta - 4 Bed 6 Bath (Type Cambridge)

Pattaya, Nong Plalai, Thailand

Reference: 0980

฿17,290,000



4 Bedrooms



6 Bathrooms



Villa

Property Description

Welcome to Chieftain by Patta, a prestigious house project that embodies the essence of luxury living in Pattaya. This exclusive development, featuring Revival Art Deco style architecture, is set on a hillock along National Highway No.36, offering panoramic views and a serene living experience. Designed for discerning homeowners, Chieftain by Patta promises spacious, airy living spaces and utmost privacy.

Location and Neighborhood

Chieftain by Patta is strategically located in Nong Pla Lai, Bang Lamung, Chon Buri, along Highway 36. This prime location ensures easy access to Pattaya, Bangkok, Laem Chabang, and Rayong, providing a perfect blend of convenience and tranquility. The neighborhood is poised to offer a balanced lifestyle with close proximity to local amenities, schools, and entertainment options.

Property Details

The project encompasses 62 single-detached houses spread across two floors. Each house boasts a land size starting from 316.8 sq.m. (79.2 sq.wa) for the Ascot type and 360 sq.m. (90 sq.wa) for other types.

The living spaces are meticulously designed, featuring:

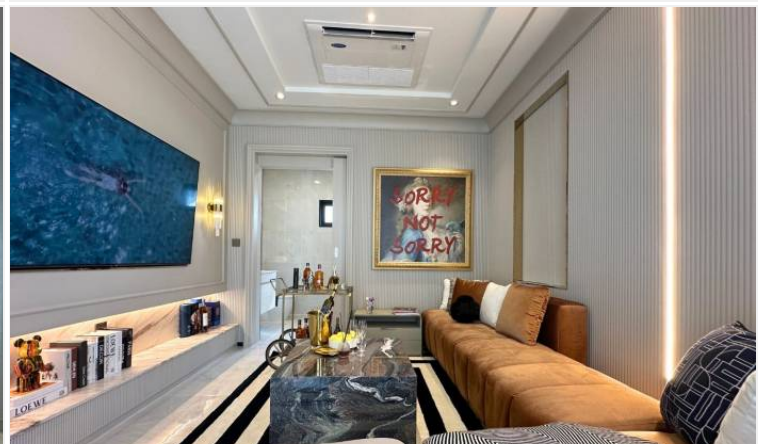
4 Bedrooms 5-6 Bathrooms 2 Living Rooms Modern Kitchen Dining Area Storage Room Laundry Room Washing Area, 1 to 3 Car Garage

Condition and Amenities

Chieftain by Patta is currently under construction and set to welcome residents in 2026. This pet-friendly project offers a wide range of facilities: 24-hour security, CCTV Surveillance, covered parking swimming pool, fitness, garden, playground, jogging track, clubhouse function room.

*This price is the price of unfurnished standard house with sanitary wares of all restrooms and kitchen provided. Swimming pool is optional for all types of house.

Photo Gallery





Property Details

- **Property Type:** Villa
- **Location:** Pattaya, Nong Plalai, Thailand
- **Internal Area:** 307m²
- **Land Area:** 370m²
- **Price:** **฿17,290,000**
- **Bedrooms:** 4
- **Bathrooms:** 6

Property Features

- Security
- Swimming Pool
- Air Conditioning
- Balcony
- Car Park
- Electricity
- Alarm

Location

