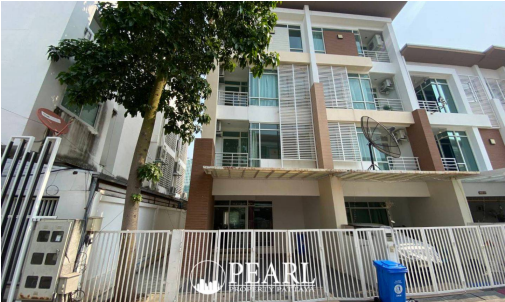
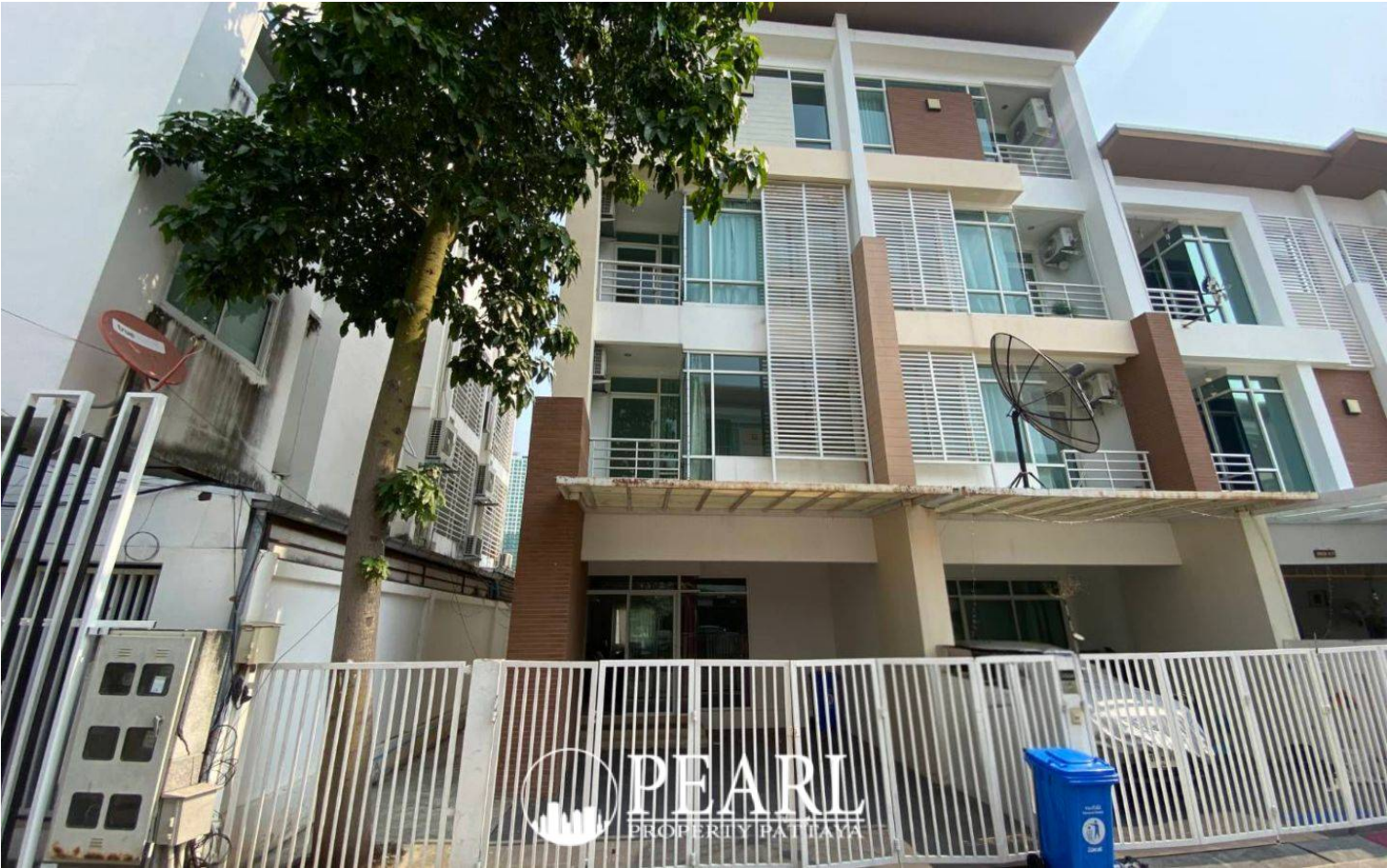


SP Village Jomtien - 4 Bed 5 Bath

Pattaya, Jomtien, Thailand
Reference: 2746

฿9,000,000



4 Bedrooms



5 Bathrooms



Condo

Property Description

Pearl Property presents a spacious 4-story townhome in The Gallery Condominium, combining modern design with functional living space.

Situated on 29 sq. wah of land, this home features 5 bedrooms and 4 bathrooms, making it perfect for families or those in need of extra space for work and relaxation.

Property Details:

4-story townhome

5 bedrooms, 4 bathrooms

Land size: 29 sq. wah

Floor Plan:

1st floor: Open-plan living area and kitchen

2nd floor: 2 bedrooms, 1 bathroom

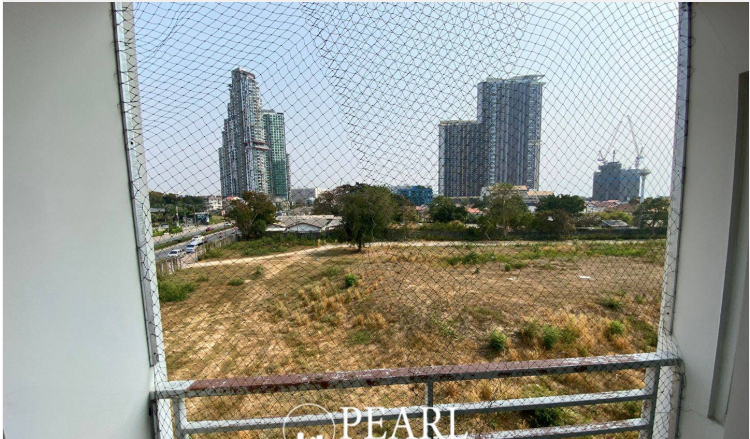
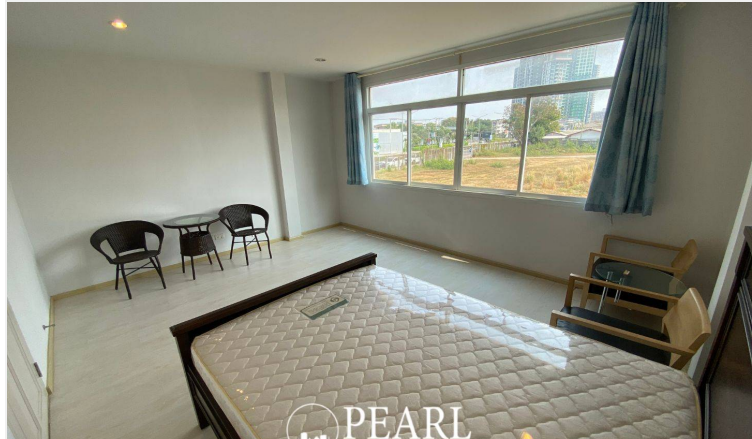
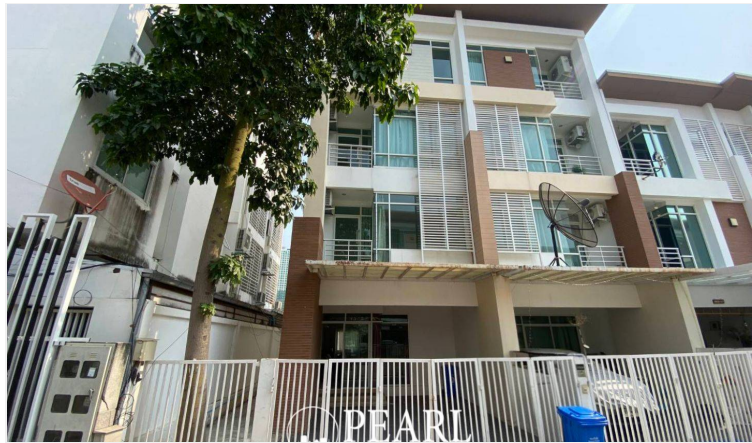
3rd floor: 2 bedrooms, 1 bathroom

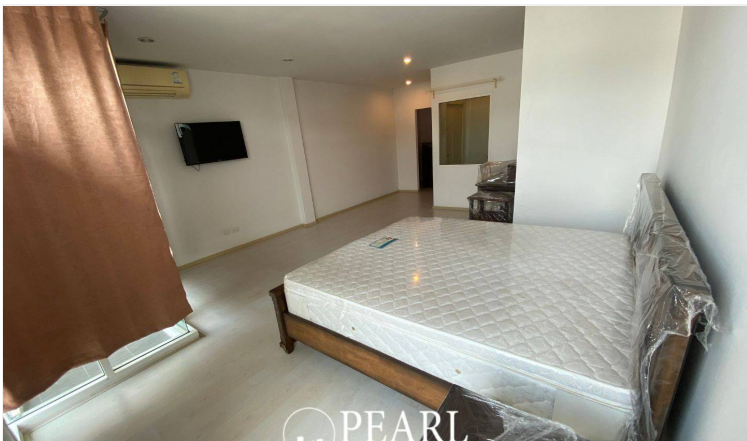
4th floor: 1 bedroom, 1 bathroom

The Gallery Condominium offers modern facilities and a prime location with easy access to shopping centers, restaurants, and entertainment venues.

Don't miss the opportunity to own this stylish townhome. Contact us today to schedule a viewing or arrange a virtual tour.

Photo Gallery







Property Details

- **Property Type:** Condo
- **Location:** Pattaya, Jomtien, Thailand
- **Internal Area:** 116m²
- **Price:** ฿9,000,000
- **Bedrooms:** 4
- **Bathrooms:** 5

Property Features

- Security
- Gym
- Swimming Pool
- Air Conditioning
- Balcony
- Car Park
- Electricity
- Lift

Location

