

# The Vision 2 Bed - 2 Bath Sea View

Pattaya, Nong Prue, Thailand  
Reference: 7121

฿10,499,000



2 Bedrooms



2 Bathrooms



Condo

# Property Description

Experience unparalleled luxury with this stunning condo located on the highest point of Phratumnak Hill in Pattaya. This high-floor corner unit offers breathtaking views and modern amenities that epitomize upscale living.

## Property Details

- **Type:** Luxury Condo
- **Location:** Phratumnak Hill, Pattaya
- **Title:** Freehold Title Deed, Registered in Foreigners' Name
- **Size:** 90 sqm
- **Bedrooms:** 2
- **Bathrooms:** 2
- **Balconies:** 2 (including an extra-large balcony)

## Interior Features

This fully furnished condo is styled in a modern cool white theme, providing a sleek and contemporary living space. It comes with:

- **Complete Kitchen:** Equipped with an induction cooker and large refrigerator
- **Appliances:** Washing machine, four air conditioning units, and three televisions
- **Connectivity:** High-speed internet available

## Stunning Views

- **Sea View:** From the extra-large balcony, enjoy panoramic vistas of Jomtien Bay, Koh Larn, and Pattaya Bay.
- **Big Buddha View:** The small balcony offers a serene view of the iconic Big Buddha.

## Amenities

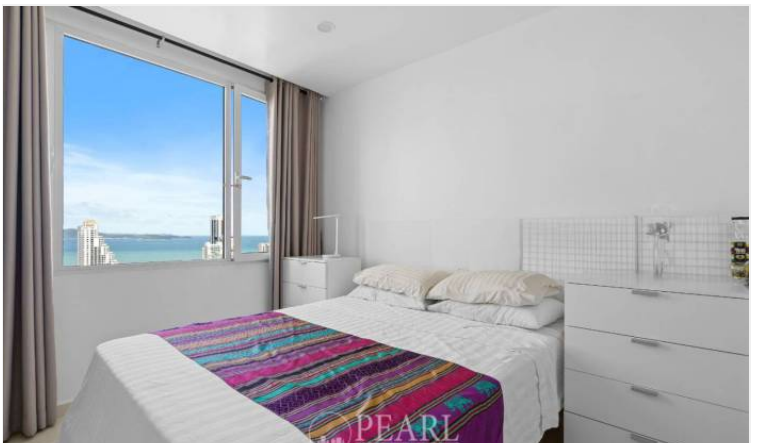
- **Rooftop Swimming Pool:** A 25-meter rooftop pool with spectacular views
- **Fully Equipped Rooftop:** Perfect for relaxing and entertaining guests

## Photo Gallery

---









## Property Details

---

- **Property Type:** Condo
- **Location:** Pattaya, Nong Prue, Thailand
- **Internal Area:** 90m<sup>2</sup>
- **Land Area:** 90m<sup>2</sup>
- **Price:** ฿10,499,000
- **Bedrooms:** 2
- **Bathrooms:** 2

## Property Features

---

- Security
- Gym
- Sauna
- Swimming Pool
- Air Conditioning
- Balcony
- Car Park
- Electricity
- Integral Kitchen
- Internet
- Alarm
- Children's Area
- Guardhouse
- Lift
- Office
- Equipped Kitchen
- Terrace
- Disabled Access

## Location

---

