

# Riviera Jomtien - 1Bed 1 Bath Studio Sea View ( 33th Floor)

Pattaya, Jomtien, Thailand  
Reference: 2176

฿4,799,080



1 Bedrooms



1 Bathrooms



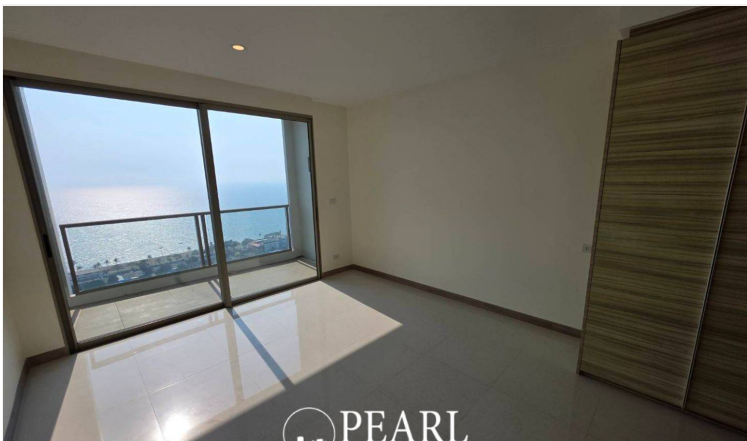
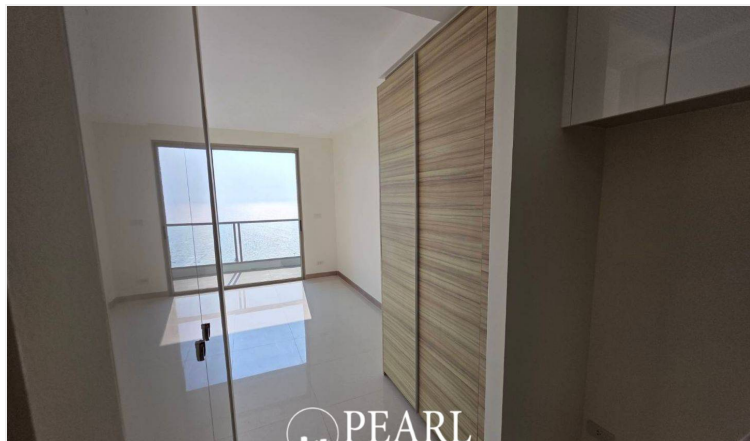
Condo

# Property Description

The New Landmark of Jomtien A luxurious high-rise condominium designed to stand out on the skyline, offering breathtaking panoramic views of Jomtien Beach. Conveniently located on Jomtien Second Road, near Sukhumvit Road, providing easy access to all major destinations. Over 80% of the units feature direct sea views. World-Class Facilities The Riviera Jomtien offers an exceptional living experience with premium facilities, including a large swimming pool, jacuzzi, clubhouse, meeting room, games room, sauna, fitness center, and kid’s club. The highlight features include Sky Fitness and an infinity-edge pool on the 42nd floor. Unit Details 1 Bedrooms, 1 Bathrooms 33.56 sq.m. Studio of living space 33th floor with a sea view Fully furnished European-style kitchen, dining area, and living space Sales Conditions Available under Foreign Quota ownership

# Photo Gallery







# Property Details

---

- **Property Type:** Condo
- **Location:** Pattaya, Jomtien, Thailand
- **Internal Area:** 33.56m<sup>2</sup>
- **Price:** ฿4,799,080
- **Bedrooms:** 1
- **Bathrooms:** 1

# Property Features

---

- Security
- Gym
- Jacuzzi
- Sauna
- Swimming Pool
- Air Conditioning
- Balcony
- Car Park
- Electricity
- Integral Kitchen
- Internet
- Alarm
- Children's Area
- Concierge
- Guardhouse
- Lift
- Roof Garden
- Equipped Kitchen
- Terrace
- Disabled Access

# Location

---

