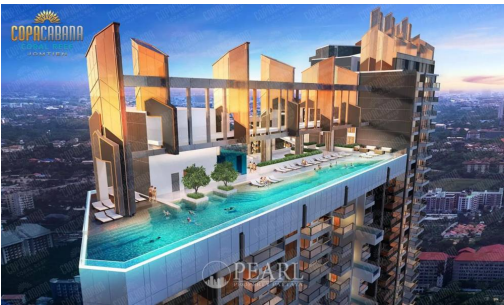


# Copacabana Coral Reef Jomtien

Pattaya, Jomtien, Thailand

Reference: 1269

฿3,723,632



1 Bedrooms

0 Bathrooms

Condo

# Property Description

Copacabana Coral Reef: Luxurious Living in Jomtien, Pattaya

Welcome to **Copacabana Coral Reef Jomtien**, a beacon of modern luxury and sophisticated living in the heart of Pattaya's vibrant Jomtien district. This high-rise condominium project promises an unparalleled living experience with its contemporary design, panoramic sea views, and top-tier amenities.

## Prime Location and Neighborhood

Situated just a 5-minute walk from the serene Jomtien Beach and a 2-minute stroll from Rompoh market, bars, and restaurants, **Copacabana Coral Reef** boasts an enviable location. Its proximity to Pattaya's key attractions, including the Pattaya Floating Market (7 minutes by car), Walking Street (17 minutes), and Central Festival Shopping Center (20 minutes), ensures residents are never far from the action.

## Exquisite Property Details

Scheduled for completion between the 4th quarter of 2028 and the 2nd quarter of 2029, **Copacabana Coral Reef** stands tall with 56 floors housing 1,880 apartments. This single-building project offers various unit types, ranging from cozy 1-bedroom units of 34.90 sqm to more spacious 2-bedroom units up to 72 sqm, some featuring private pools. Residents can enjoy stunning sea or city views, complemented by balconies for a breath of fresh air.

## Luxurious Amenities and Modern Comfort

The project promises top-of-the-line facilities for a life of ease and luxury. These include a communal swimming pool, a garden with a kid's playground, a state-of-the-art fitness center, sauna, restaurant, bar, and high-level security with CCTV and keycard access. Additionally, the 51st-floor sky pool, tropical pool, bike lane, tennis court, onsen, sauna, steam room, beach club, and co-working space add to the allure of this modern paradise.

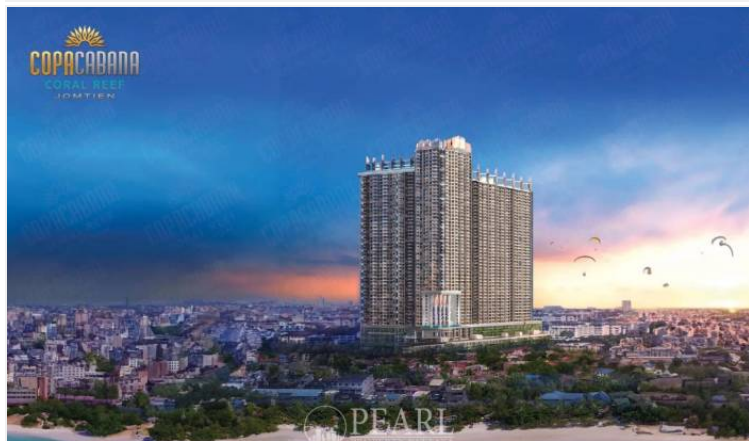
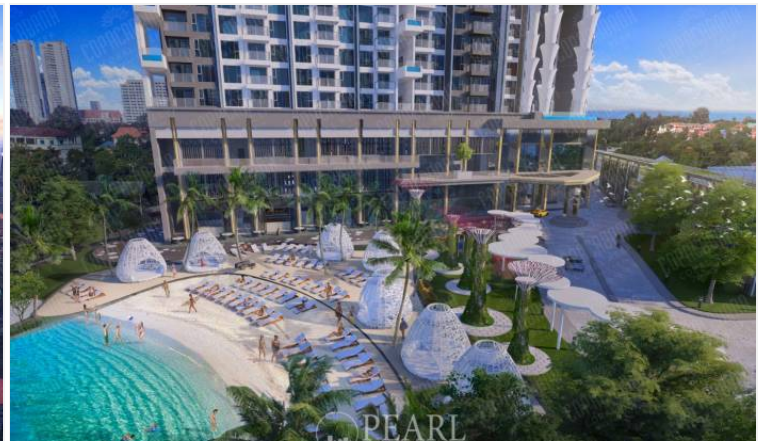
## Key Features at a Glance



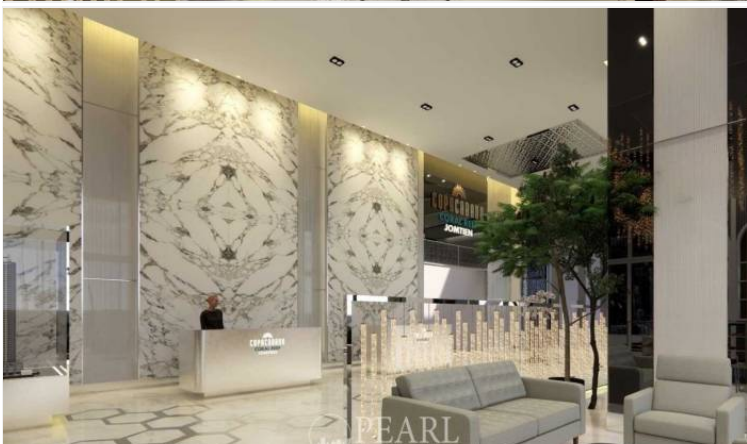
- **Prime Location:** Close to Jomtien Beach, Rimpoh market, and key attractions.
- **Property Details:** 56 floors, 1,880 apartments, 1- and 2-bedroom units, private pools.
- **Amenities:** Communal swimming pool, kid's playground, fitness center, sauna, restaurant, bar, high-level security, sky pool, tropical pool, bike lane, tennis court, onsen, sauna, steam room, beach club, co-working space.

Discover the epitome of luxury and convenience at **Copacabana Coral Reef Jomtien**. Experience modern living at its finest, surrounded by breathtaking views and world-class amenities. For more information or to schedule a viewing, contact us today!

## Photo Gallery







## Property Details

---

- **Property Type:** Condo
- **Location:** Pattaya, Jomtien, Thailand
- **Land Area:** 21138m<sup>2</sup>
- **Price:** ฿3,723,632
- **Bedrooms:** 1
- **Bathrooms:** 0

## Property Features

---

- Security
- Gym
- Jacuzzi
- Sauna
- Swimming Pool
- Air Conditioning
- Balcony
- Car Park
- Electricity
- Children's Area
- Lift
- Terrace
- Library

## Location

---



